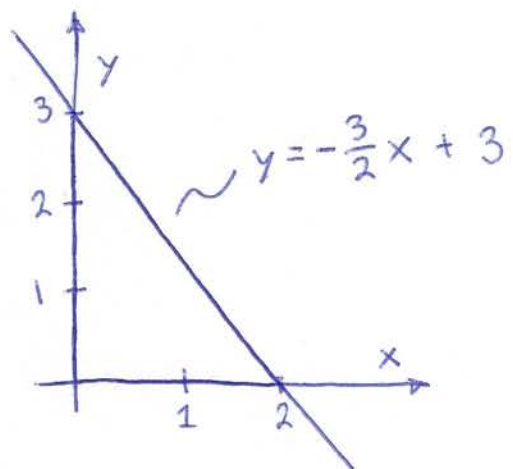
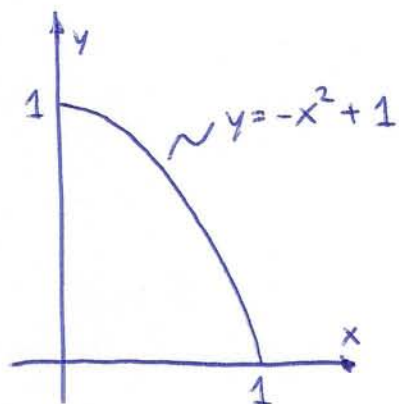


find the area described in the figure



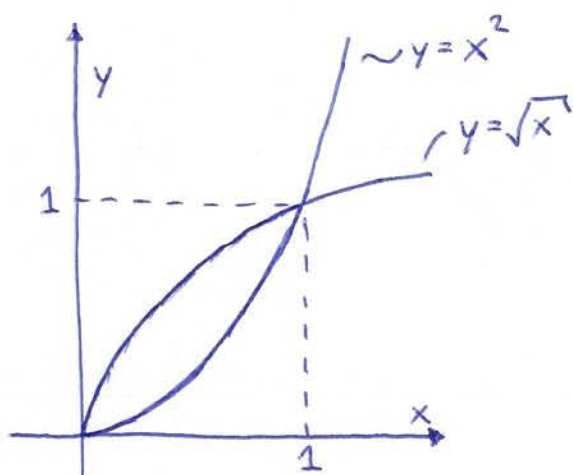
area of enclosed triangle?

find the area described in the figure



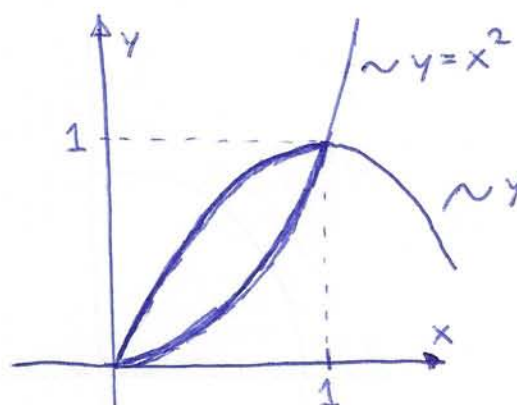
area of enclosed parabola

find the area described in the figure



area enclosed by  
 $y = \sqrt{x}$  and  $y = x^2$

find the area described in the figure



area enclosed by  
 $y = \sin(\frac{\pi}{2}x)$  and  $y = x^2$ .