

(5 marks) Suppose you are building a hall that is parabolic in cross section as shown in the figure.

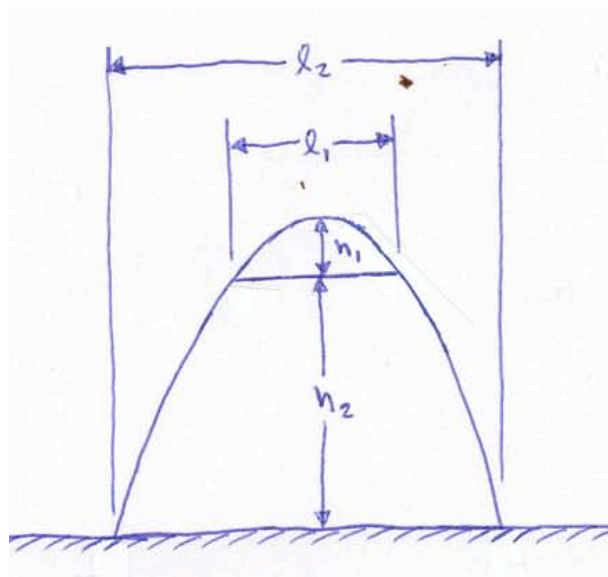
If the hall has the following parameters:

bottom platform width ( $L_2$ ) = 20 m

top ceiling width ( $L_1$ ) = 10 m

height between ceiling and platform ( $h_2$ ) = 20 m

determine  $h_1$



(5 marks) A hydro wire hanging between two poles could be expressed with a 2nd order polynomial. If the hydro poles are 50m apart and the maximum sag in the wire is 2m, determine the equation of the wire between the two poles.

(5 marks) Suppose you are building a hall that is parabolic in cross section as shown in the figure.

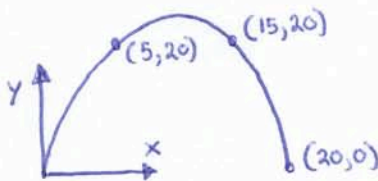
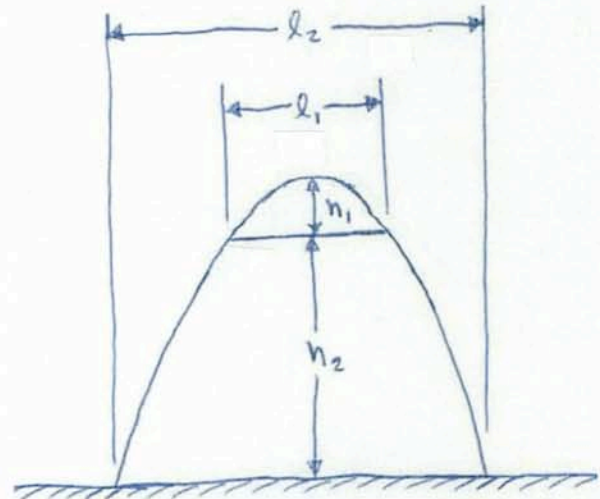
If the hall has the following parameters:

bottom platform width ( $L_2$ ) = 20 m

top ceiling width ( $L_1$ ) = 10 m

height between ceiling and platform ( $h_2$ ) = 20 m

determine  $h_1$



$$y = a(x-m)(x-n)$$

$$= a(x-0)(x-20)$$

sub (5,20):

$$20 = a[5]([5]-20)$$

$$a = -\frac{4}{15} = -0.2667$$

so

$$y = -\frac{4}{15}(x)(x-20)$$

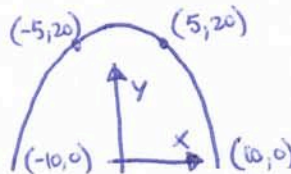
Find  $h_1$

$$y = -\frac{4}{15}(10)(10-20)$$

$$= 26.67$$

$$h_1 = 26.67 - 20$$

$$h_1 = 6.67 \text{ m}$$



$$y = a(x-m)(x-n)$$

$$= a(x+10)(x-10)$$

sub (5,20)

$$20 = a(5+10)(5-10)$$

$$a = -\frac{4}{15} = -0.2667$$

so

$$y = -\frac{4}{15}(x+10)(x-10)$$

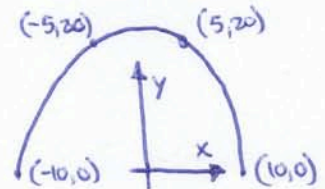
Find  $h_1$

$$y = -\frac{4}{15}(0+10)(0-10)$$

$$= 26.67$$

$$h_1 = 26.67 - 20$$

$$h_1 = 6.67 \text{ m}$$



$$y = a(x-h)^2 + k$$

$$= a(x-0)^2 + k$$

sub (-10,0)

$$0 = a(-10)^2 + k$$

$$k = -100a \quad (1)$$

sub (-5,20)

$$20 = a(-5)^2 + k$$

$$20 = 25a + k$$

sub in (1)

$$20 = 25a + [-100a]$$

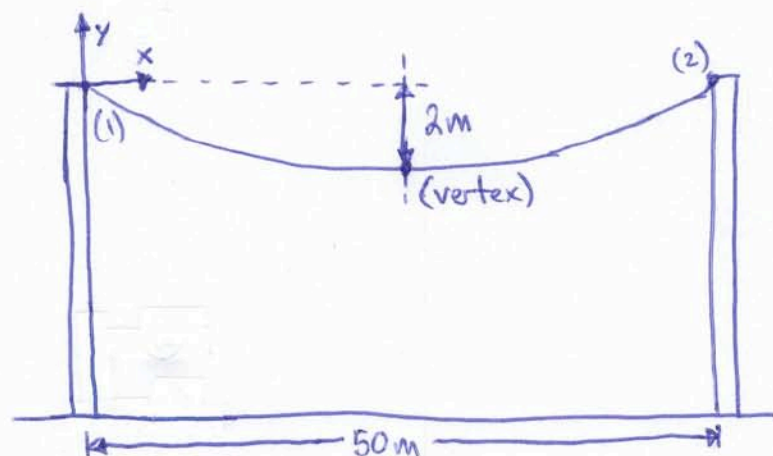
$$a = -\frac{4}{15} = -0.2667$$

$$k = -100[-\frac{4}{15}] = 26.67$$

$$h_1 = 26.67 - 20$$

$$h_1 = 6.67 \text{ m}$$

(5 marks) A hydro wire hanging between two poles could be expressed with a 2nd order polynomial. If the hydro poles are 50m apart and the maximum sags in the wire is 2m, determine the equation of the wire between the two poles.



use  $y = a(x-h)^2 + k$

by observation of vertex:

$$h = \frac{50}{2} = 25$$

$$k = -2$$

so

$$y = a(x-25)^2 + (-2)$$

solve for "a" using point 1

$$0 = a(0-25)^2 - 2 \Rightarrow a = \frac{2}{(-25)^2} = 0.0032$$

solve for "a" using point 2 (check)

$$0 = a(50-25)^2 - 2 \Rightarrow a = \frac{2}{25^2} = 0.0032$$

so

$$y = (0.0032)(x-25)^2 - 2$$

use

$$y = a(x-m)(x-n)$$

by observation of roots:

$$m = 0$$

$$n = 50$$

solve for "a"

$$-2 = a(25)(25-50) \Rightarrow a = \frac{-2}{(25)(-25)} = 0.0032$$

so

$$y = (0.0032)(x)(x-50)$$